



Petroleum UC Guideline

Your guide to petroleum related activities in the conference! We hope it is useful in helping you navigate the virtual platform.

Plenary Sessions

Monday, July 12 | 8:30 AM–12:00 PM PDT

Tuesday, July 13 | 8:30 AM–10:00 AM PDT

Included:

- Special Interest Group (SIG) Session
- User Presentations
- Technical Sessions
- Virtual Expo
- Things To Do

Virtual Info Desk

If you have any general questions during the event, please visit the Virtual Info Desk, located in the main navigation of the event platform.



Special Interest Group

The Esri Petroleum User Group is growing and evolving, please come join the PUG SIG to receive an update on activities, progress & resources, and ways in which the community can interact to discuss specific technologies and workflows, through an interactive Q&A.

- Introduction | Nathan Marx, PUG Vice Chair (Chevron) & Brian Boulmay (Esri)
- PUG Overview for new members
- New Initiatives & Opportunities
- Resources Review – Web pages, Hub Sites, Esri Community Ideas/Discussion Forums
- Panel Discussion – with PUG Community Members
- Open Discussion – On trends, challenges, technology and the future | PUG Community Members

Thursday, July 15, 1:00 - 2:00 PM (PDT)

Panelists

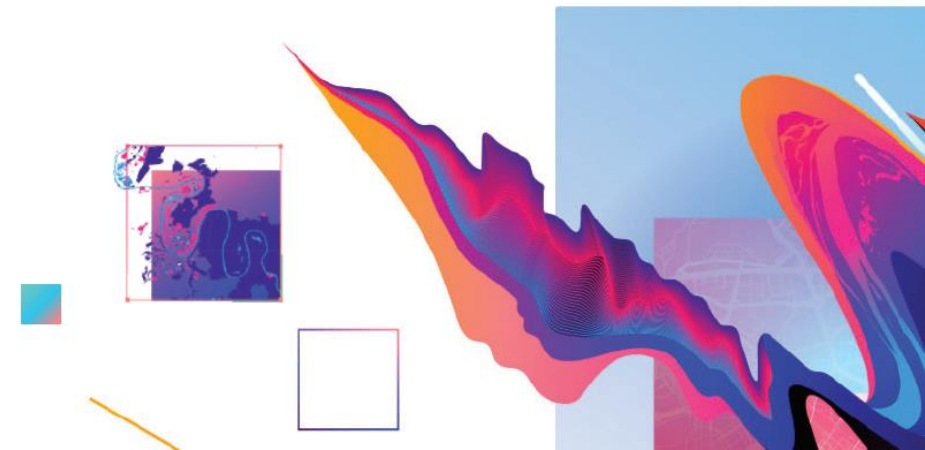
Brian Boulmay, Esri
Nathan Marx, Chevron
Andrew Klein, Texas A&M University
Garrett Rimel, bp
Keith Fraley, 40Geo

Jesse Aerts, Appalachian Mineral Partners
Phil Lampe, Reliance Marcellus
Ryan Kearny, Goodnight Midstream
Victor Rutherford, Plains Midstream Canada
Alina Shematova, SM Energy

Additional SIGs of interest

Thursday, July 15

6:45 AM PDT	Young Professionals Network
8:00 AM PDT	Pipeline
9:15 AM PDT	Mining
9:15 AM PDT	Natural Resources and Environment
1:00 PM PDT	Sustainable Development Goals
1:00 PM PDT	Corporate Social Responsibility
1:00 PM PDT	Petroleum User Group (PUG)
3:30 PM PDT	Renewable Energy





User Presentations

ON DEMAND SESSIONS

Available starting Sunday, July 11 at 9:00am PDT

GIS As a Key Enabler in Digital Transformation for Kuwait Oil Company

As a step towards digital transformation, KOC IT & GIS leadership launched KOC Maps Portal platform in 2019, with the aim to modernize its enterprise geographic information system using GIS Portal technology. The vision was to improve GIS accessibility to all departments & to foster better discovery & collaboration around geospatial data, processes & workflows through a web-based mapping & analytics platform.

Shaima Shihab – *Kuwait Oil Company*

A Global De-Risking Tool for Subsurface fluid and Heat Reservoir Portfolio

The distribution of vertical gravity gradient values has been analyzed within and outside prolific basins and large oil fields. Gradient values > 75 mGal/degree indicate limited space for subsurface fluids. This cutoff is proposed in the global de-risking and valuation of license portfolio for hydrocarbon production, subsurface gas/CO2 storage, and geothermal reservoirs. Sparse negative gravity values may reflect economic bias due to high costs and deep drilling safety risks.

Sofia Campo – *Equinor ASA*

ArcGIS QuickCapture, the New Hub for the Field - Link Buttons and URL Parameters

At v1.7 QuickCapture has the ability to become a hybrid of data capture and hub site for the field. Link buttons and callback parameters can tie field apps and workflows together, as well as Dashboards, StoryMaps (user guides), alerting (call/SMS/email), and more. From Pipeline Surveillance to Emergency Response, QuickCapture gives field teams a single simple interface for field workflows, allowing for rapid and detailed data capture from one app. Hub for the web, QuickCapture for the field.

Jamie Lambert - *ExxonMobil*

Search for these great user presentations and more using the filtered search capabilities in the agenda.

Map Data Distribution Over GIS Services and Their Presentation in ArcGIS Online

GIS team in Rystad Energy manages global map data from energy sector. This paper will present how we have succeeded to streamline the process from data updates, through service synchronization in a cloud to distribution and visualization (also 3D) in ArcGIS Online. All deployment is based on Esri technology, such as ArcGIS Pro, Data Interoperability extension, ArcGIS Online, REST services, Web App Builder, StoryMaps and Dashboards.

Stephan Nysveen- *Rystad Energy*

Navigating Colorado's Regulatory Environment - A GIS Based Look

In early 2020, the COGCC (Colorado Oil and Gas Commission) gave approval for what could be the largest setback governance in the US. The regulations call for a 2000' setback from all buildings in Colorado. By utilizing a building footprint dataset, a 'drillable' acreage layer can be attained. We will look at creating this layer in ArcGIS Pro and viewing it in ArcGIS Online.

Andy Bohnhoff – *Platte River Analytics*

Technical Sessions

Included are a subset of highlighted tech sessions; please check agenda for full offerings.

Monday, July 12		
Time	Session Title	Session ID
12:30 PM	ArcGIS and Microsoft 365: Better Together	12864
12:30 PM	ArcGIS Field Maps: An Introduction & What's New	12870
12:30 PM	ArcGIS Platform: A Developer's Introduction	13080
12:30 PM	ArcGIS Spatial Analyst: Suitability Modeler	13078
12:30 PM	Getting Started with Imagery	13226
12:30 PM	Living Atlas: An Introduction	12986
12:30 PM	Spatial Data Science in ArcGIS	13229
1:45 PM	ArcGIS API for JavaScript: An Introduction	13096
1:45 PM	ArcGIS Enterprise: What's New	13056
1:45 PM	ArcGIS Field Maps: Migrating to Field Maps	12871
1:45 PM	ArcGIS Image for ArcGIS Online: An Introduction	13115
1:45 PM	ArcGIS Pro: The Road Ahead	12775
3:00 PM	3D Across ArcGIS	13173
3:00 PM	ArcGIS Enterprise on Kubernetes: An Introduction for Administrators	13161
3:00 PM	Living Atlas: Livefeeds Maps and Workflows for Disaster Response	12948
3:00 PM	ArcGIS Enterprise: Deployment Options	13131
3:00 PM	ArcGIS Experience Builder: An Introduction	13038
3:00 PM	ArcGIS Image Analyst: An Introduction	13101
3:00 PM	ArcGIS Survey123: An Introduction and What's New	12883
3:00 PM	ArcGIS: Python Overview	13085

Tuesday, July 13		
Time	Session Title	Session ID
7:15 AM	ArcGIS Hub: An Introduction	13234
7:15 AM	ArcGIS QuickCapture: An Introduction and What's New	12881
7:15 AM	ArcGIS Enterprise: The Road Ahead	12777
7:15 AM	ArcGIS Experience Builder: Designing Apps with Style and Layout	13164
7:15 AM	ArcGIS Image Server: Image Management and Analysis at Scale	13227
7:15 AM	ArcGIS Velocity: An Introduction	13110
11:45 AM	ArcGIS Survey123: Working with Online Surveys	12882
11:45 AM	ArcGIS Enterprise: Q&A with the Product Teams	13072
11:45 AM	ArcGIS Imagery: What's New	13098
11:45 AM	ArcGIS Online: The New Map Viewer	13021
11:45 AM	Living Atlas: Imagery and Elevation	12946
1:00 PM	ArcGIS Enterprise: Designing Sites and Pages	13057
1:00 PM	ArcGIS Mission: An Introduction & What's New	13233
1:00 PM	ArcGIS Online: The Road Ahead	12776
1:00 PM	ArcGIS Pro: Migrating from ArcMap	12896
2:15 PM	Living Atlas: Environmental Content, Mapping, and Analysis Workflows	12949
2:15 PM	ArcGIS Field Maps: Data Collection & Inspection Workflows	12876
2:15 PM	ArcGIS Pro: 3D Analysis, an Overview	13176
2:15 PM	ArcGIS Pro: Q&A with the Product Teams	13236

Technical Sessions

Included are a subset of highlighted tech sessions; please check agenda for full offerings.

Wednesday, July 14		
Time	Session Title	Session ID
7:30 AM	ArcGIS Dashboards: Designing Effective Dashboards	13185
7:30 AM	ArcGIS Field Maps: Creating and Using Smart Forms	12875
7:30 AM	ArcGIS Velocity: Real-Time and Big Data Analytics	13118
7:30 AM	ArcGIS: Introduction to Deep Learning for Imagery	13105
7:30 AM	ArcGIS GeoAnalytics: Spatiotemporal Analysis of Big Vector Data	13071
7:30 AM	ArcGIS StoryMaps: What's New and What's Coming	13231
10:00 AM	ArcGIS Field Apps: The Road Ahead	12778
10:00 AM	Living Atlas: Esri Basemaps and OpenStreet Map	12992
10:00 AM	ArcGIS Pro: Taking Advantage of 3D	12852
10:00 AM	Big Data, Spatial Analytics and Machine Learning: Workflows and Applications	13120
10:00 AM	Drone Imagery: Creating Orthomosaics, DTMS and 3D Mesh	13122
11:15 PM	ArcGIS Field Apps: Q&A with the Product Teams	12880
11:15 PM	ArcGIS Monitor: Beyond the Basics	13061
11:15 PM	ModelBuilder: Tips and Tricks	13068
11:15 AM	ArcGIS 3D Analyst: Lidar Classification and Feature Extraction	13095
11:15 AM	ArcGIS: Map Wizardry	12823

Time	Session Title	Session ID
12:30 PM	ArcGIS Field Maps: Location Tracking	12877
12:30 PM	ArcGIS Survey123: Field Data Collection with Smart Forms	13238
12:30 PM	ArcGIS Enterprise: Publishing Content and Services	13058
12:30 PM	ArcGIS Hub: Managing and Collaborating with Your Community	13127
12:30 PM	ArcGIS Pipeline Referencing: Introduction and What's New	12891
12:30 PM	Enabling Conservation Planning with GIS: A Vision for 30 by 30	13222
12:30 PM	Spatial Analysis & Data Science: The Road Ahead	12779
1:45 PM	Deep Dive Into Deep Learning	13187
1:45 PM	ArcGIS Field Maps: Taking Your Maps Offline	12872
1:45 PM	ArcGIS Survey123: Advanced Smart Form Design	12884
1:45 PM	Spatial Data Science: What's New in Time Series Analysis	13054

EXPO

Included are a subset of highlighted tech sessions; please check agenda for full offerings.



con•terra

V203

con terra is an Esri Platinum Partner, bringing ArcGIS expertise & business-critical solutions to customers for over 25 years. This year we spotlight our security & access control solution for ArcGIS: security.manager. But security.manager isn't just about security! By allowing admins to control access to data within a service, it helps optimize workflows by filtering content without having to publish multiple services for each group. So stop struggling & start sharing, with security.manager.



GeoDecisions

V172

GeoDecisions is an international consulting firm specializing in geospatial technology systems, cloud technology, and analytics for commercial, municipal, state, and federal government organizations. We offer a suite of SaaS and tailored solutions that equip decision-makers with the data, intelligence, and visual information critical to planning, logistics, public safety, emergency response, security, asset management, incident management, resource management, and mass notification.



CRITIGEN

V119

Critigen is a full-lifecycle spatial systems integrator driving business performance through spatial IT solutions. Critigen helps clients make spatial technologies "work" in organizations of all sizes, integrates spatial technologies with enterprise systems, and enables field users with mobile spatial solutions. With global reach, top-tier partnerships, and a full-lifecycle approach, Critigen delivers all components of a geospatial program: data collection, spatial processing, and analytics.



V144

SSP provides award-winning solutions to electric, gas, and water utilities; telecommunications providers; and pipeline operators across the globe. Our solutions are designed to help our customers meet their unique business challenges through a combination of deep technology expertise and unmatched familiarity with utility industry best practices.



here

V125

HERE Technologies moves people, businesses and cities forward by harnessing the power of location. We enable our customers to achieve better outcomes - from helping a city manage its infrastructure or a business optimize its assets to guiding drivers to their destination safely. To learn more about HERE, please visit www.here.com and <http://360.here.com>.



VertiGIS

V104

VertiGIS builds powerful GIS software for the real world. It offers solutions and services that help utilities, land management, public sector, energy, telecommunications, and industry customers make valuable connections and the build solutions they need to solve their unique business challenges. The VertiGIS product portfolio, including Geocortex, VertiGIS Utilities, ProOffice and M4 Solutions, is used by thousands of customers and millions of end-users around the world.



GEOCOMM

V108

GeoComm serves local, regional, statewide, and military agencies nationwide, empowering us to execute our mission of helping save lives and protect property by delivering Public Safety Location Intelligence®: the right location data, on the right map, for the right people at the right time.



V174

Founded in 1991, GISinc provides Premier GIS Services to federal and state + local governments, as well as commercial clients. Using the science and technology of geography, GISinc integrates the spatial context to business information systems. GISinc helps customers leverage this intelligence to solve complex problems across the country and worldwide.

EXPO

Included are a subset of highlighted tech sessions; please check agenda for full offerings.

Organization	Booth	Organization	Booth
1Spatial Inc	V238	NASA Earth Science	V220
Airbus	V110	National Audubon Society	V122
Amazon Web Services	V231	NatureServe	V127
Association of American Geographers	V171	NOAA	V193
Bad Elf, LLC	V177	Patrick Engineering	V175
Blue Raster	V109	Planet	V132
Carlson Software	V115	Pro-West & Associates	V114
con terra GmbH	V203	RAMTeCH	V213
Critigen	V119	ROK Technologies	V133
DTN	V244	Royal Society for the Protection of Birds	V128
Eos Positioning Systems	V102	Safe Software Inc	V160
First American DataTree LLC	V274	Seequent	V249
GEO Jobe	V170	Skytec LLC	V215
GeoComm	V108	Spire Global	V200
GeoDecisions	V172	SSP Innovations LLC	V144
Geodesign - Penn State University	V120	Texas A&M University	V141
GISinc	V174	The Nature Conservancy	V240
HERE Technologies	V125	The Sanborn Map Company	V246
L3Harris Technologies	V153	The Trust for Public Land	V169
Laser Technology, Inc.	V106	Trimble Inc	V103
Leica Geosystems Inc.	V242	Unacast	V267
Magnolia River	V121	University of Denver - GIS Master's Program	V159
Maxar	V192	Ursa Space Systems	V211
Microsoft Corporation	V270	VertiGIS	V104
		Woods Hole Research Center	V116

Things To Do



UC Virtual Run/Walk/Bike 2021

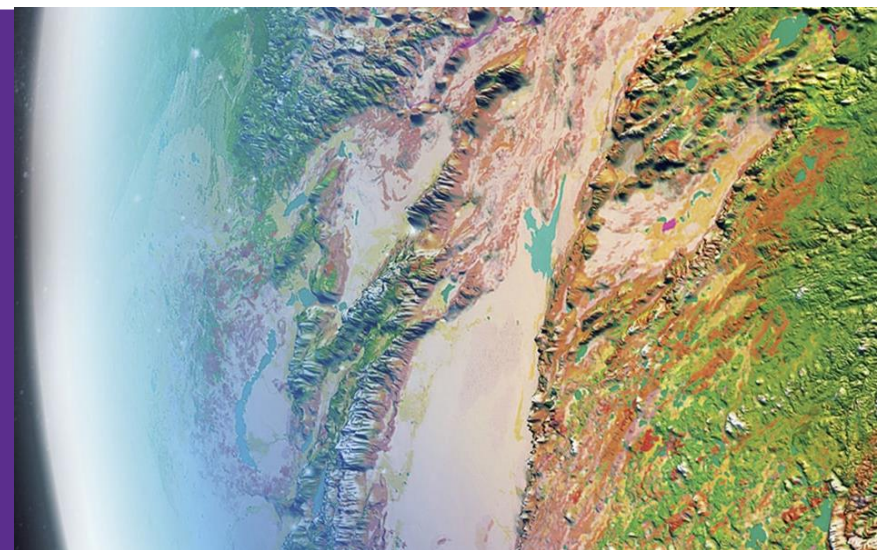
A fun and active way for you to get involved in this year's conference. Since we can't run together like we normally would, we are hosting a virtual event for participants of all abilities. You can run, walk, or bike as many times as you like between July 10 and July 18. Log your trips and help us reach our community goal to go around the world!

<https://uc-2021-running.hub.arcgis.com/>

Esri Science Symposium

Meet Dr. Dawn Wright, chief scientist of Esri, and special guest Dr. Healy Hamilton, chief scientist of NatureServe, on July 15 for a virtual, interactive discussion. Explore climate change, sustainability, geodesign, and more. The symposium theme is Working together to serve science and society. The symposium features a Q&A session and opportunities to connect with other science-minded users via our Esri Community.

<https://www.esri.com/en-us/about/events/science-symposium/overview>



Esri Petroleum Team



Brian Boulmay
*Director, Petroleum
Community & Solutions*
bboulmay@esri.com



Sam Rosario
*Business Development
Team Lead*
srosario@esri.com



Tiffany Glenn
*Natural Resources
Account Executive*
tglenn@esri.com



Matt Ballard
*Natural Resources
Solution Engineer*
mballard@esri.com



Paul Hartwell
*Natural Resources
Partner Executive*
phartwell@esri.com



Sarah Powell
*Natural Resources
Marketing Specialist*
Sarah_powell@esri.com

Reach out to the Esri Petroleum staff during the conference by **chat** or **schedule a meeting**. Plus, stay connected with the Esri Petroleum Community all year long!

- Twitter: [@EsriPetroleum](https://twitter.com/EsriPetroleum) (use #EsriUC while attending the virtual UC)
- LinkedIn: Petroleum [PUG Online](#) group
- Esri's [Petroleum GeoNet Community](#)