



Forestry UC Guideline

Your guide to forestry related activities in the conference! We hope it is useful in helping you navigate the virtual platform.

Plenary Sessions

Monday, July 12 | 8:30 AM–12:00 PM PDT

Tuesday, July 13 | 8:30 AM–10:00 AM PDT

Included:

- Special Interest Group (SIG) Session
- User Presentations
- Technical Sessions
- Virtual Expo
- Things To Do

Virtual Info Desk

If you have any general questions during the event, please visit the Virtual Info Desk, located in the main navigation of the event platform.



Special Interest Group

Join the Esri team for a one-hour special event to hear from subject-matter-experts from across the global forestry community in a guided discussion on today's most relevant topics. Sustainable forest management, the application of Imagery and Remote sensing, Analytics from machine and IoT data, chain of custody and telling the forestry story are topics we expect to discuss. Participants will have an opportunity to ask questions and discuss topics with the panelists.

Thursday, July 15 2:15 to 3:15 PM (PDT)

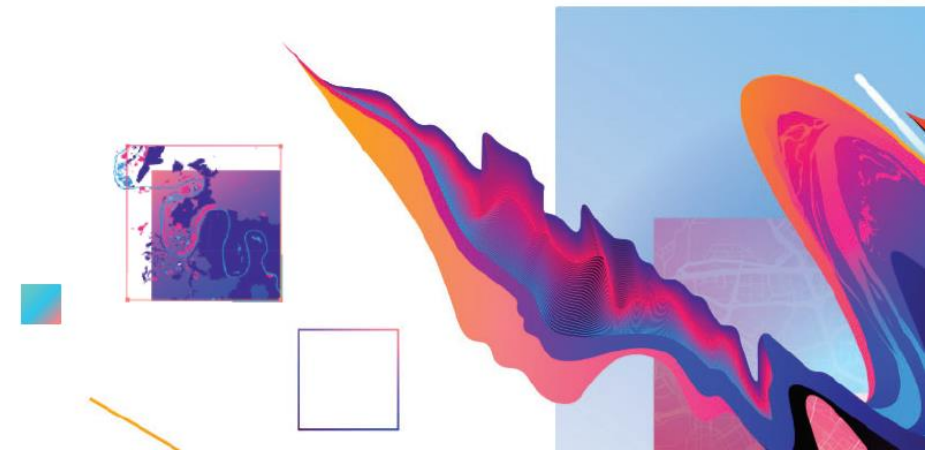
Panelists

Lisa Nilsson, Holmen
Operations & Analytics
Christopher Oswalt, USDA Forest Service
Analytics & Remote Sensing
Rachel Greene, Tennessee Division of Forestry
Collaboration & Constituent Engagement
Richard Hall, Buckhead Resources
Carbon Modeling

Additional SIGs of interest

Thursday, July 15

- 6:45 AM Conservation
- 6:45 AM Women and GIS
- 6:45 AM Young Professionals Network
- 8:00 AM AEC: Environmental Consulting and Management
- 8:00 AM Non-Profit and NGO
- 8:00 AM Using GIS to Operationalize Racial Equity & Social Justice
- 9:15 AM Natural Resources and Environment
- 10:30 AM GIS for Equity & Social Justice
- 10:30 AM Agriculture
- 10:30 AM Water Resources
- 10:30 AM Wildfire
- 1:00 PM Ecos Sustainability and Environmental Justice
- 1:00 PM Sustainable Development Goals
- 3:30 PM Renewable Energy



User Presentations

ON DEMAND SESSIONS

Available starting Sunday, July 11 at 9:00 am PDT

Boundary Agnostic Data in a Shared Stewardship World

Discuss the implementation of a shared Stewardship focused on vegetation management and fire risk reduction. It's a pretty specific product – mostly a communication venue to show how/where we are coordinated with state agency on priorities and the challenges that come with communicating and aligning project work across ownership boundaries.

Nora Miebach - *USFS, Pacific Northwest Region R6*

Using Satellite Imagery for Early Tracking and Detection

The drive to digitalize business processes has provided an excellent opportunity to leverage ESRI's configurable apps to implement easy to build and easy to use apps which enable the capture and consolidation of field data, sharing of remote sensing data for early warning and reporting of forestry activities and supports decision making across the forestry lifecycle from planning to planting, managing and monitoring growth and incidents, and scheduling and tracking harvesting activities.

Miranda Wilson - *Mondi*

Authoritative Forest Inventory Data Products for the Contiguous United States

The USDA Forest Service Forest Inventory and Analysis (FIA) Program has leveraged satellite imagery and advances in computing to link multiple broad-scale datasets for developing nationally consistent raster data layers using ArcGIS Enterprise and Raster Analytics. FIA's Big Data, Mapping, and Analytics Platform (BIGMAP) is a cloud-based system for scalable production, analysis, and delivery of geospatial products and immersive decision-support tools.

Christopher Oswalt - *Southern Research Station Forest Inventory & Analysis*

Developing workflows for large-scale cloud analytics of forest inventory data

At the USDA Forest Service Forest Inventory and Analysis (FIA) Program, one objective is turning plots to pixels. Combining data from over 350,000 forest inventory plots with remotely-sensed data is now easier than it used to be. However, the process of architecting a cloud infrastructure, software configuration, and performance testing is often challenging. We will discuss the technical aspects of taking workflows that were developed under different programming paradigms and adapting them.

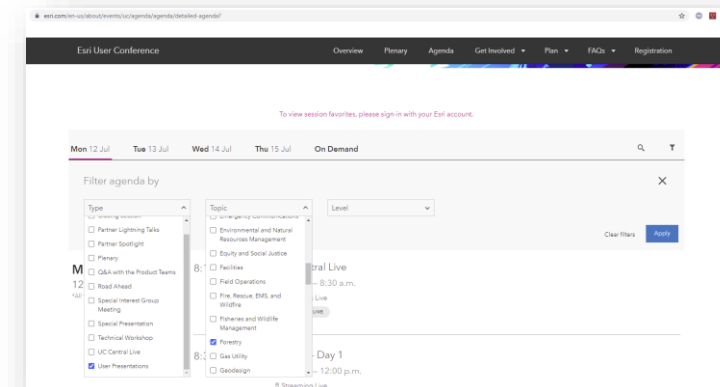
Charles Werstak - *USDA Forest Service*

Mapping the Stratification and Accuracy of Vegetation Classes in Miombo Forest

The mapping of the stratification of vegetation classes in the Miombo forests was carried out with the aim of assessing the land-use dynamics of these ecosystems in the Upper Katanga Province in the Democratic Republic of Congo (DRC), which are facing one of the strong anthropogenic pressures due to slash-and-burn agriculture, galloping exploitation of fuelwood (carbonization), late bush fires, artisanal exploitation of minerals and, to a large extent, demographic pressure.

Serge Kalawu - *OSFAC*

Search for these great user presentations and more using the filtered search capabilities in the agenda.



Related Industry User Presentations

On-Demand Sessions

AGRICULTURE

Combating Agricultural Drought in the Netherlands with Satellite GIS Data

How to Create Conservation Plan Maps in 3D Using LiDAR and Imagery and AGOL

Mapping Coffee and Carbon in the Time of COVID-19

Mapping Horticulture Tree Crops in Australia

Mapping of Possible Expansion Areas of SOYA in Paraguay According to the RTRS Guide

Modernized Data Management for Fruit Fly Eradication Programs in Florida

Sweet and Sustainable: Using GIS to Prevent Future Cocoa-related Deforestation

The Global Agriculture & Disaster Assessment System (GADAS) powered by Esri

CLIMATE CHANGE

Deploying Guyana's National Forest Monitoring Platform

CONSERVATION

Making Conservation Data Operational

A New Approach for Visualizing Biodiversity in Europe

Best Practices for Biodiversity Mapping and Analytics

Building Partnerships for Landscape Level Conservation

Finding the Balance for Off-Road Vehicle Use

Restoring the World's Forests

Understanding Bird Migration with Enterprise GIS

Visualizing and Monitoring Global Biodiversity

PLANNING

Growing Equitable Tree Canopy: Austin's Community Tree Priority Map

ENVIRONMENTAL & NATURAL RESOURCES MANAGEMENT

Crowdsourced Flood Monitoring and Applications for Inundation Model Validation

Department of Energy Office of Legacy Management Enterprise Geospatial Implementation Program

Detecting the Invisible: AI-Based Wetland Mapping

Implementation of a Regional Lead-in-Soil Environmental Investigation

New Jersey Department of Environmental Protection Leverages Web GIS to Improve Communication with Stakeholders

Underground Storage Tank Finder: EPA's National Map of Underground Storage Tanks and Releases

Using Suitability Modeling to Save Access to Rock Climbing Areas

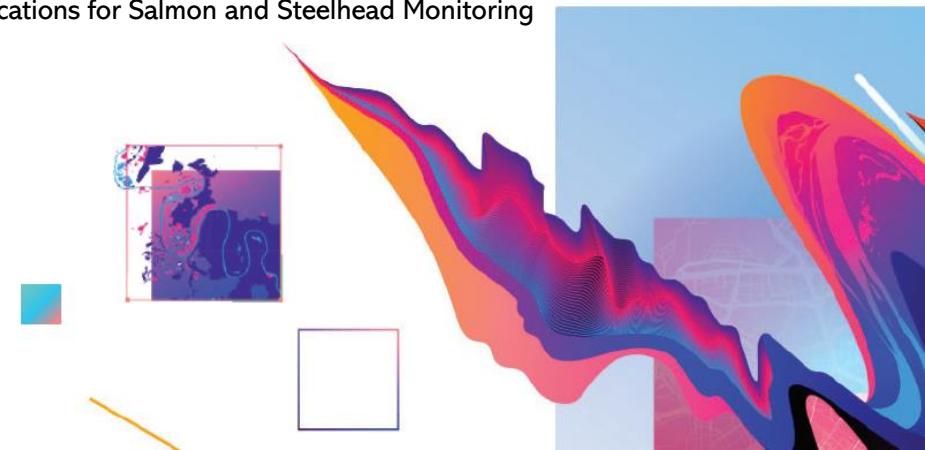
Utilizing Survey123 and Dashboards for Environmental and HAZMAT Investigations

Crowdsourced Flood Monitoring and Applications for Inundation Model Validation

FISHERIES & WILDLIFE MANAGEMENT

Communicating Spatial Aspects of Endangered Species Pesticide Risk Assessment

Utilizing Esri Field Applications for Salmon and Steelhead Monitoring



Technical Sessions

Included are a subset of highlighted tech sessions; please check agenda for full offerings.

Monday, July 12		
Time	Session Title	Session ID
12:30 PM	ArcGIS and Microsoft 365: Better Together	12864
12:30 PM	ArcGIS Field Maps: An Introduction & What's New	12870
12:30 PM	ArcGIS Platform: A Developer's Introduction	13080
12:30 PM	ArcGIS Spatial Analyst: Suitability Modeler	13078
12:30 PM	Getting Started with Imagery	13226
12:30 PM	Living Atlas: An Introduction	12986
12:30 PM	Spatial Data Science in ArcGIS	13229
1:45 PM	ArcGIS API for JavaScript: An Introduction	13096
1:45 PM	ArcGIS Enterprise: What's New	13056
1:45 PM	ArcGIS Field Maps: Migrating to Field Maps	12871
1:45 PM	ArcGIS Image for ArcGIS Online: An Introduction	13115
1:45 PM	ArcGIS Pro: The Road Ahead	12775
3:00 PM	3D Across ArcGIS	13173
3:00 PM	ArcGIS Enterprise on Kubernetes: An Introduction for Administrators	13161
3:00 PM	Living Atlas: Livefeeds Maps and Workflows for Disaster Response	12948
3:00 PM	ArcGIS Enterprise: Deployment Options	13131
3:00 PM	ArcGIS Experience Builder: An Introduction	13038
3:00 PM	ArcGIS Image Analyst: An Introduction	13101
3:00 PM	ArcGIS Survey123: An Introduction and What's New	12883
3:00 PM	ArcGIS: Python Overview	13085

Tuesday, July 13		
Time	Session Title	Session ID
7:15 AM	ArcGIS Hub: An Introduction	13234
7:15 AM	ArcGIS QuickCapture: An Introduction and What's New	12881
7:15 AM	ArcGIS Enterprise: The Road Ahead	12777
7:15 AM	ArcGIS Experience Builder: Designing Apps with Style and Layout	13164
7:15 AM	ArcGIS Image Server: Image Management and Analysis at Scale	13227
7:15 AM	ArcGIS Velocity: An Introduction	13110
11:45 AM	ArcGIS Survey123: Working with Online Surveys	12882
11:45 AM	ArcGIS Enterprise: Q&A with the Product Teams	13072
11:45 AM	ArcGIS Imagery: What's New	13098
11:45 AM	ArcGIS Online: The New Map Viewer	13021
11:45 AM	Living Atlas: Imagery and Elevation	12946
1:00 PM	ArcGIS Enterprise: Designing Sites and Pages	13057
1:00 PM	ArcGIS Mission: An Introduction & What's New	13233
1:00 PM	ArcGIS Online: The Road Ahead	12776
1:00 PM	ArcGIS Pro: Migrating from ArcMap	12896
2:15 PM	Living Atlas: Environmental Content, Mapping, and Analysis Workflows	12949
2:15 PM	ArcGIS Field Maps: Data Collection & Inspection Workflows	12876
2:15 PM	ArcGIS Pro: 3D Analysis, an Overview	13176
2:15 PM	ArcGIS Pro: Q&A with the Product Teams	13236

Technical Sessions

Included are a subset of highlighted tech sessions; please check agenda for full offerings.

Wednesday, July 14		
Time	Session Title	Session ID
7:30 AM	ArcGIS Dashboards: Designing Effective Dashboards	13185
7:30 AM	ArcGIS Field Maps: Creating and Using Smart Forms	12875
7:30 AM	ArcGIS Velocity: Real-Time and Big Data Analytics	13118
7:30 AM	ArcGIS: Introduction to Deep Learning for Imagery	13105
7:30 AM	ArcGIS GeoAnalytics: Spatiotemporal Analysis of Big Vector Data	13071
7:30 AM	ArcGIS StoryMaps: What's New and What's Coming	13231
10:00 AM	ArcGIS Field Apps: The Road Ahead	12778
10:00 AM	Living Atlas: Esri Basemaps and OpenStreet Map	12992
10:00 AM	ArcGIS Pro: Taking Advantage of 3D	12852
10:00 AM	Big Data, Spatial Analytics and Machine Learning: Workflows and Applications	13120
10:00 AM	Drone Imagery: Creating Orthomosaics, DTMS and 3D Mesh	13122
11:15 PM	ArcGIS Field Apps: Q&A with the Product Teams	12880
11:15 PM	ArcGIS Monitor: Beyond the Basics	13061
11:15 PM	ModelBuilder: Tips and Tricks	13068
11:15 AM	ArcGIS 3D Analyst: Lidar Classification and Feature Extraction	13095
11:15 AM	ArcGIS: Map Wizardry	12823

Time	Session Title	Session ID
12:30 PM	ArcGIS Field Maps: Location Tracking	12877
12:30 PM	ArcGIS Survey123: Field Data Collection with Smart Forms	13238
12:30 PM	ArcGIS Enterprise: Publishing Content and Services	13058
12:30 PM	ArcGIS Hub: Managing and Collaborating with Your Community	13127
12:30 PM	ArcGIS Pipeline Referencing: Introduction and What's New	12891
12:30 PM	Enabling Conservation Planning with GIS: A Vision for 30 by 30	13222
12:30 PM	Spatial Analysis & Data Science: The Road Ahead	12779
1:45 PM	Deep Dive Into Deep Learning	13187
1:45 PM	ArcGIS Field Maps: Taking Your Maps Offline	12872
1:45 PM	ArcGIS Survey123: Advanced Smart Form Design	12884
1:45 PM	Spatial Data Science: What's New in Time Series Analysis	13054

EXPO

Included are a subset of Natural Resource oriented partners; please check Expo for full listing.



con•terra

V203

con terra is an Esri Platinum Partner, bringing ArcGIS expertise & business-critical solutions to customers for over 25 years. This year we spotlight our security & access control solution for ArcGIS: security.manager. But security.manager isn't just about security! By allowing admins to control access to data within a service, it helps optimize workflows by filtering content without having to publish multiple services for each group. So stop struggling & start sharing, with security.manager.



GeoDecisions

V172

GeoDecisions is an international consulting firm specializing in geospatial technology systems, cloud technology, and analytics for commercial, municipal, state, and federal government organizations. We offer a suite of SaaS and tailored solutions that equip decision-makers with the data, intelligence, and visual information critical to planning, logistics, public safety, emergency response, security, asset management, incident management, resource management, and mass notification.



CRITIGEN

V119

Critigen is a full-lifecycle spatial systems integrator driving business performance through spatial IT solutions. Critigen helps clients make spatial technologies "work" in organizations of all sizes, integrates spatial technologies with enterprise systems, and enables field users with mobile spatial solutions. With global reach, top-tier partnerships, and a full-lifecycle approach, Critigen delivers all components of a geospatial program: data collection, spatial processing, and analytics.



V144

SSP provides award-winning solutions to electric, gas, and water utilities; telecommunications providers; and pipeline operators across the globe. Our solutions are designed to help our customers meet their unique business challenges through a combination of deep technology expertise and unmatched familiarity with utility industry best practices.



here

V125

HERE Technologies moves people, businesses and cities forward by harnessing the power of location. We enable our customers to achieve better outcomes - from helping a city manage its infrastructure or a business optimize its assets to guiding drivers to their destination safely. To learn more about HERE, please visit www.here.com and <http://360.here.com>.



VertiGIS

V104

VertiGIS builds powerful GIS software for the real world. It offers solutions and services that help utilities, land management, public sector, energy, telecommunications, and industry customers make valuable connections and the build solutions they need to solve their unique business challenges. The VertiGIS product portfolio, including Geocortex, VertiGIS Utilities, ProOffice and M4 Solutions, is used by thousands of customers and millions of end-users around the world.



GEOCOMM

V108

GeoComm serves local, regional, statewide, and military agencies nationwide, empowering us to execute our mission of helping save lives and protect property by delivering Public Safety Location Intelligence®: the right location data, on the right map, for the right people at the right time.



V174

Founded in 1991, GISinc provides Premier GIS Services to federal and state + local governments, as well as commercial clients. Using the science and technology of geography, GISinc integrates the spatial context to business information systems. GISinc helps customers leverage this intelligence to solve complex problems across the country and worldwide.

EXPO

Included are a subset of Natural Resource oriented partners; please check Expo for full listing.

Organization	Booth
1Spatial Inc	V238
Airbus	V110
Amazon Web Services	V231
Association of American Geographers	V171
Bad Elf, LLC	V177
Blue Raster	V109
Carlson Software	V115
con terra GmbH	V203
Critigen	V119
DTN	V244
Eos Positioning Systems	V102
First American DataTree LLC	V274
GEO Jobe	V170
GeoComm	V108
GeoDecisions	V172
Geodesign - Penn State University	V120
GISinc	V174
HERE Technologies	V125
L3Harris Technologies	V153
Laser Technology, Inc.	V106
Leica Geosystems Inc.	V242
Magnolia River	V121
Maxar	V192
Microsoft Corporation	V270

Organization	Booth
NASA Earth Science	V220
National Audubon Society	V122
NatureServe	V127
NOAA	V193
Patrick Engineering	V175
Planet	V132
Pro-West & Associates	V114
RAMTeCH	V213
ROK Technologies	V133
Royal Society for the Protection of Birds	V128
Safe Software Inc	V160
Seequent	V249
Skytec LLC	V215
Spire Global	V200
SSP Innovations LLC	V144
Texas A&M University	V141
The Nature Conservancy	V240
The Sanborn Map Company	V246
The Trust for Public Land	V169
Trimble Inc	V103
Unacast	V267
University of Denver - GIS Master's Program	V159
Ursa Space Systems	V211
VertiGIS	V104
Woods Hole Research Center	V116

Things To Do



UC Virtual Run/Walk/Bike 2021

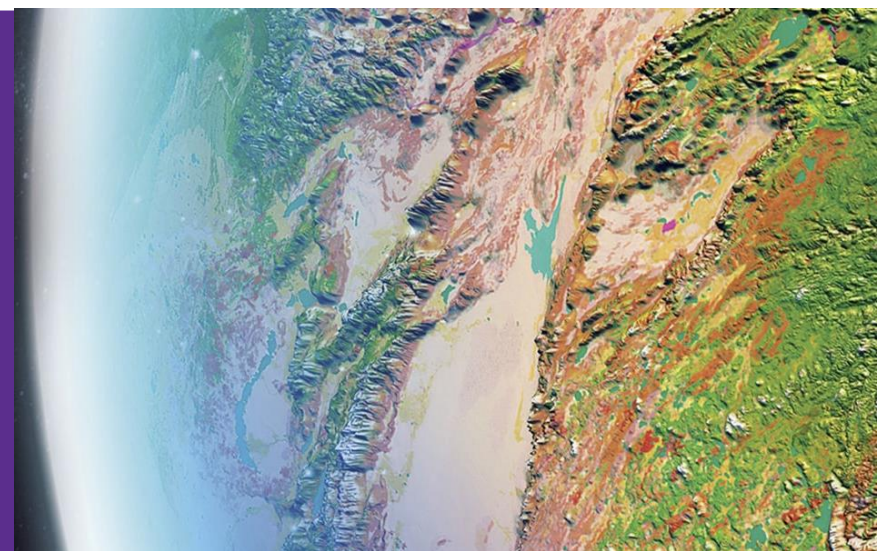
A fun and active way for you to get involved in this year's conference. Since we can't run together like we normally would, we are hosting a virtual event for participants of all abilities. You can run, walk, or bike as many times as you like between July 10 and July 18. Log your trips and help us reach our community goal to go around the world!

<https://uc-2021-running.hub.arcgis.com/>

Esri Science Symposium

Meet Dr. Dawn Wright, chief scientist of Esri, and special guest Dr. Healy Hamilton, chief scientist of NatureServe, on July 15 for a virtual, interactive discussion. Explore climate change, sustainability, geodesign, and more. The symposium theme is Working together to serve science and society. The symposium features a Q&A session and opportunities to connect with other science-minded users via our Esri Community.

<https://www.esri.com/en-us/about/events/science-symposium/overview>



Esri Forestry Team

Commercial Forestry



Adam Pittman
Team Lead
apittman@esri.com



Audrey Lamb
Account Manager
alamb@esri.com

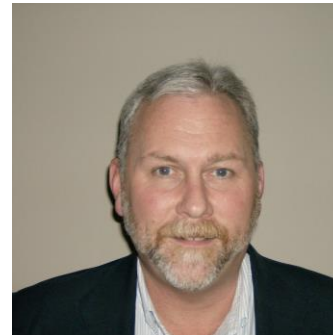


Scott Noulis
Solutions Engineer
snoulis@esri.com



Lo-Ruhama Westbrook
Marketing Specialist
lwestbrook@esri.com

Public Sector



John Steffenson
Account Executive
Federal Government
jsteffenson@esri.com



Mike Bialousz
Account Executive
Environmental, State Government
mbialousz@esri.com



Sunny Fleming
Solutions Engineer
Environmental, State Government
sfleming@esri.com

Reach out to the Esri Forestry staff during the conference by **chat** or **schedule a meeting**. Plus, stay connected with the Esri Forestry Community all year long!

- Facebook: [Esri Forestry Group](#)
- Twitter: [@EsriForestry](#)
- LinkedIn: [Esri Forestry Group](#)
- [Esri's Forestry Community](#)